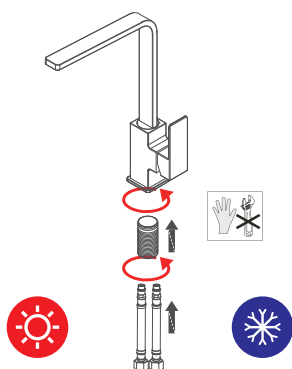


Installation Instruction

1

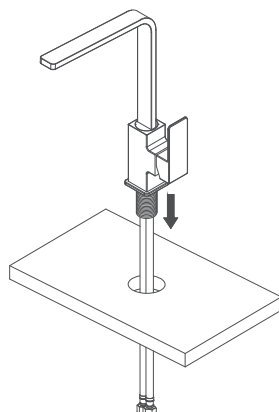


1. Install flexible hoses and the threaded tube onto the mixer, ensuring the O-ring is flat, the hoses are tight, and the threaded tube is secure.

Note:

Hot water is on the left, Cold water is on the right.

2

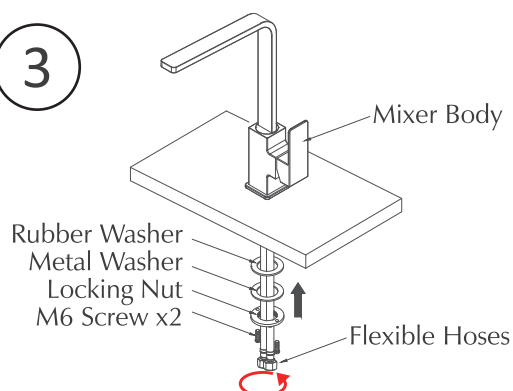


2. Put the mixer over the center of the hole to be used for mounting. Ensure the flexible hoses and threaded tube are pushed through first.

Note:

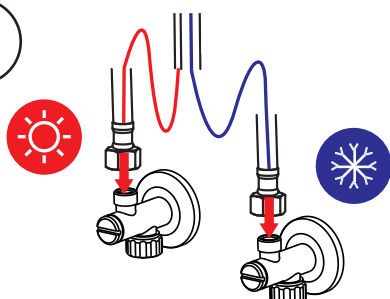
Ensure the O-ring sits within the bottom groove of the base plate to prevent water leakage through the cabinet.

3



3. Install the rubber washer and metal washer over the flexible hoses and push up until it is firm against the surface being mounted on, tighten the locking nut securely with screws to ensure the mixer is firmly attached to the surface.

4



4. Make sure the hoses are still tight as you connect them onto the wall water outlet.

Note:

Ensure pipes are flushed from the mini-stops until the water is clean prior to connecting the hoses.



Please Note:

The Plumbing Code of Australia and the Australian Standards (AS/NZS 3500) require that water pressure on your property must not exceed 500kPa. Water mains pressure may be higher depending on where you live.

This tap must be installed by a licenced plumber.