

BELLA VISTA is an Australian based company providing a wide range of professional building solutions. BELLA VISTA provides quality Bathroom, Kitchen products.

Bella Vista have invested heavily in the drain design and tooling. We have various design patents in place to patents our product and will not hesitate to issue an infringement notice to ANY PARTY CHOOSING TO IMITATE THIS PRODUCT.

Patent Number: 2013201194, 2017101579  
2016101621, 2012101620



Water Mark



Stainless

#### Important Notice:

All of the information in this document is of a general nature only and Bella Vista does not warrant the accuracy or completeness of the information and / or tips in this publication.

This publication is not intended to be a substitute for expert advice.

Bella Vista recommends to always consult an experienced and qualified person when undertaking work on a property (including consulting a qualified tradesperson to do the job). You must always follow the rules and regulations that apply to safety standards (occupational health and safety). The information and tips in this publication are provided on the basis that Bella Vista denies all liability for any damage or loss incurred (including, but not limited to, indirect and consequential loss or damage and whether or not such a loss or damage could have been foreseen) for any personal injury to the user or damage to property regardless of nature resulting from the use of the information in this document. Bella Vista is NOT responsible for permits of any work described in this document that might be subject to permits or permission by an applicable authority.

Building Group Pty Ltd ABN 23 108 039 283

Please Note:

Images in this catalogue are for illustrative purposes only. Product sizing and availability in this catalogue are 2020 correct at time of printing. Bella Vista reserves the right to modify the design, shape or delete items at any time without notice.

Please note : the drains in this catalogue are hand made , drawings and dimensions are +/- 2 mm tolerance

All Floor drains must be installed by a licensed plumber

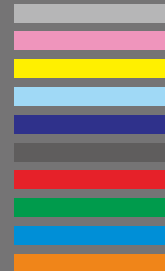
0120SG

## Floor Drains

Black

Stainless

Custom Colors  
Available  
Upon Request

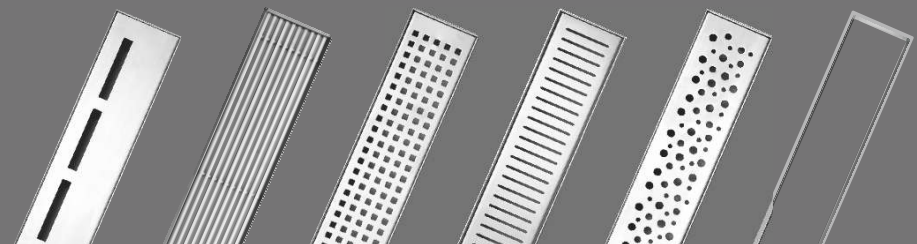


Designer Bathrooms without the price tag

**BELLA VISTA®**  
[www.bella-vista.net.au](http://www.bella-vista.net.au)

Email: Sales@bella-vista.net.au  
Postal address: PO box 4 Fawkner VIC 3060  
45a Metrolink Circuit West ,  
Campbellfield , Vic , 3061  
Fax: 03 8456 6597

Authorised distributor:



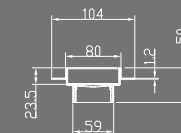
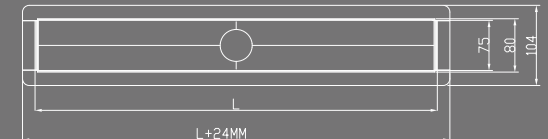
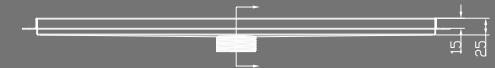
## Our Story

Bella Vista has been involved in the industry since 1998. With years of experience and attention to detail, Bella Vista produces a balance of stunning designs and practicality that touch the everyday lives of thousands of people, all over Australia.

Your home is a place to be enjoyed, and our products allow you to create a tranquil place with your own personal touches. Our following range of shower grates are no exception with industry leading designs and the highest quality materials that are designed for life.

At Bella Vista we believe that you deserve to have a Designer Bathroom Without the price tag.

## Zenon - Premium Floor Drains(SS316)



### Architectural Range –Linear Grates

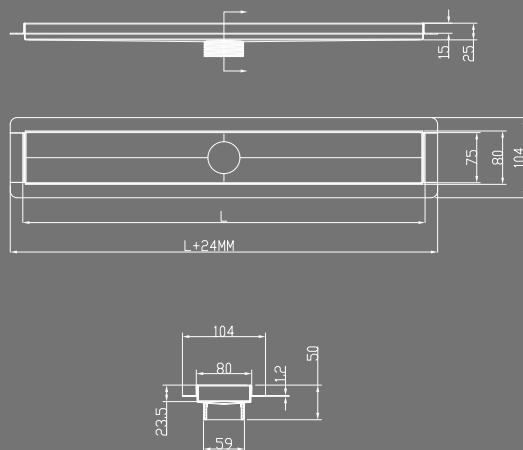
- Floor grates for commercial and residential use
- Ideal for shower recess
- Interchangeable grate covers
- 100% welded and backed by Bella Vista 25 year structural warranty
- 316 grade stainless steel, architecturally designed with a quality finish
- Patented unique design makes it easy for the tiler to install
- Watermark approved screw on waste to suit 40mm reducer ideal for puddle flange
- Outlet is standard Australian 50mm
- Sizes available: 600-800-900-1000-1100-1200-1500-1800.



# BELLA VISTA Zenon



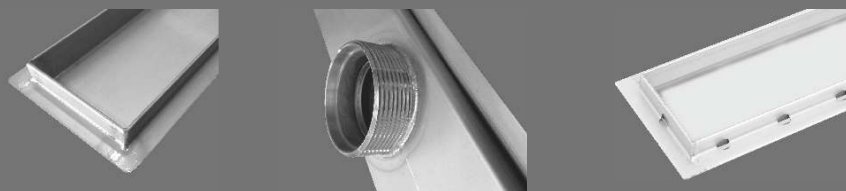
## Premium Floor Drains(SS316)



## Architectural Range –Linear Grates

- Floor grates for commercial and residential use
- Ideal for shower recess
- Interchangeable grate covers
- 100% welded and backed by Bella Vista 25 year structural warranty
- 316 grade stainless steel, architecturally designed with a quality finish
- Patented unique design makes it easy for the tiler to install
- Watermark approved screw on waste to suit 40mm reducer ideal for puddle flange
- Outlet is standard Australian 50mm
- Sizes available: 600-800-900-1000-1100-1200-1500-1800.

## Patent Protected Design



## Zenon-Premium Floor Drains Options

316 Stainless Steel

Mito(MT)



Round (R)



Square(SQ)



Linear(AU)



Slotted(SLT)



Tile Insert(T)



Rotondo(RS)



Onda(MTW)



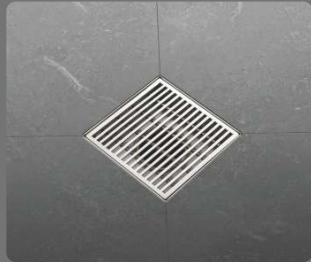
Dritto(DRT)



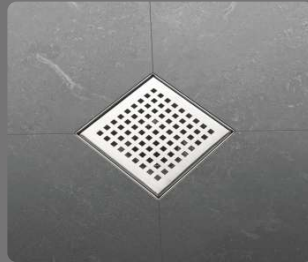
Serpente(SK)



## Zenon - Floor Drains



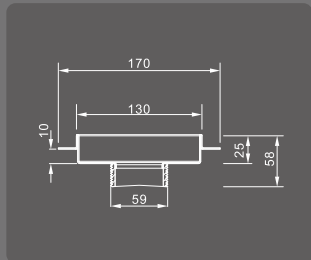
Code:SG-130-AU



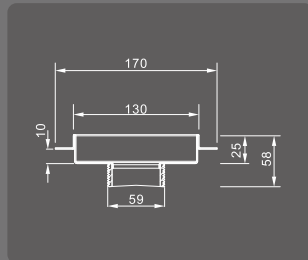
Code:SG-130-SQ



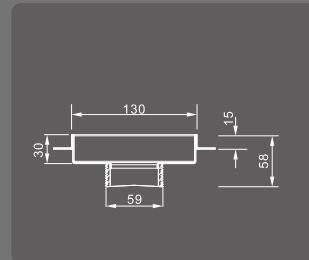
Code:SG-130-T(A)



Code:SG-130-AU  
SG-130-SQ



Code:SG-130-AU  
SG-130-SQ



Code:SG-130-T(A)

- SG-130-AU | SG-130-SQ - L-130mm x W-130mm x D-25mm
- SG-130-T(A) - L-130mm x W-130mm x D-30mm
- Unique design, easier for the tiler to install
- Constructed from 316 grade stainless steel
- Has moulded/welded tilers edge
- Watermark approved screw on waste to suit 40mm Reducer. Ideal for puddle flange
- Outlet is standard Australian 50mm

## Builders Range- Floor Drains

Available in two colors Black or Brushed Stainless



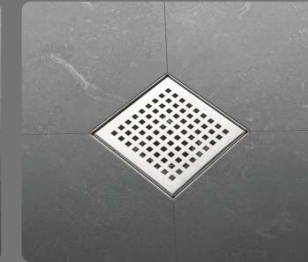
Black



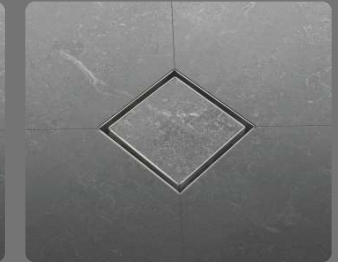
Stainless



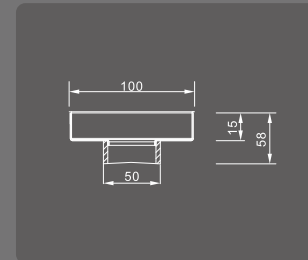
Code:CFG-100-AU



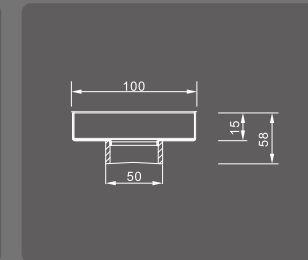
Code:CFG-100-SQ



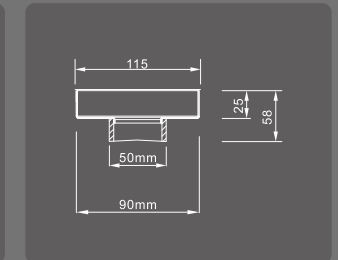
Code:CFG-115-T



Code:CFG-100-AU



Code:CFG-100-SQ

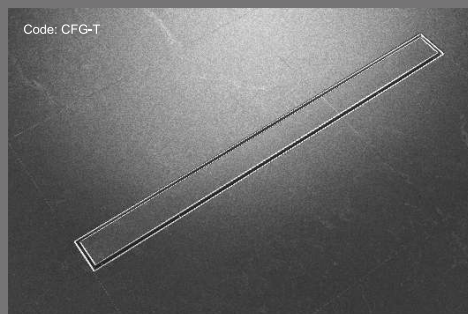
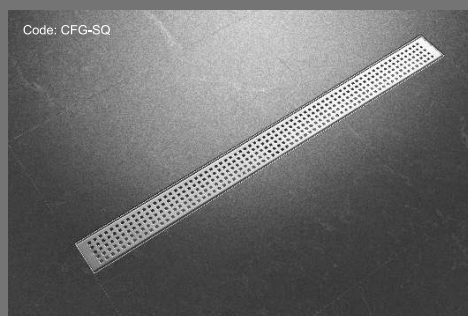
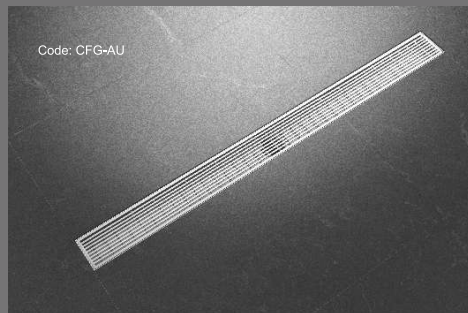


Code:CFG-115-T

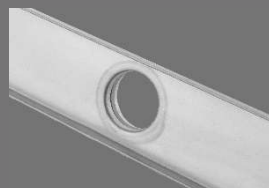
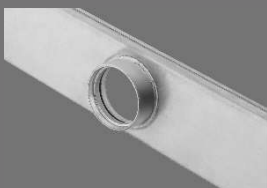
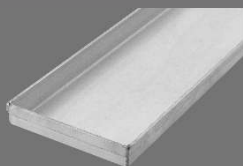
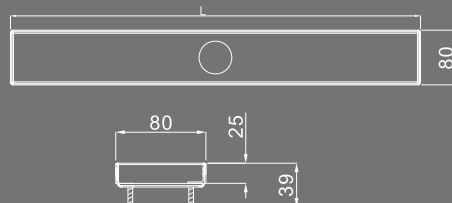
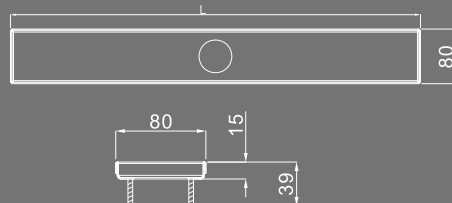
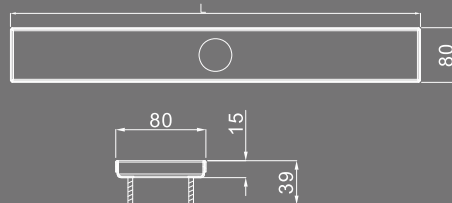
- CFG-100-SQ / L-100mm x W-100mm x H-15mm
- CFG-100-AU / L-100mm x W-100mm x H-15mm
- CFG-115-T / L-115mm x W-115mm x H-25mm Waste size available : 50mm and 90mm
- Low profile minimising the screeding prior to tiling
- Constructed from 304 grade stainless steel
- Outlet is standard Australian 50mm unless shown.



## Builders Range Floor Drains



Available in two colors Black or Brushed Stainless



- Liner Floor grates for commercial and residential use
- Ideal for shower recess
- Low profile minimising the screeding prior to tiling
- Constructed from 304 grade stainless steel
- Ideal for puddle flange
- Easy for the tiler to install
- Outlet is standard Australian 50mm

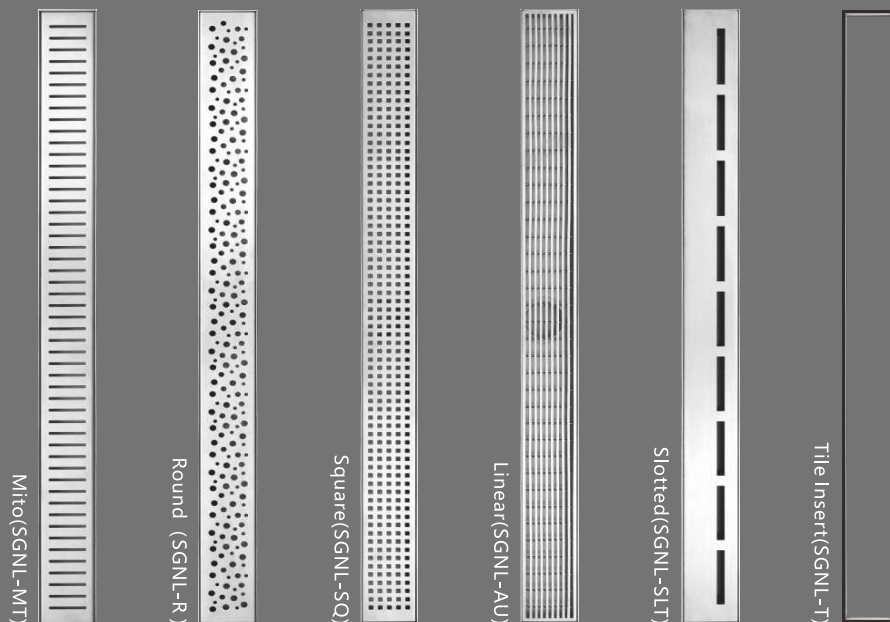
Sizes Available: 600mm, 800mm, 900mm, 1000mm, 1100mm, 1200mm, 1500mm, 1800mm.

## 304 Stainless Steel Floor Drains

### Project range (25mm deep)

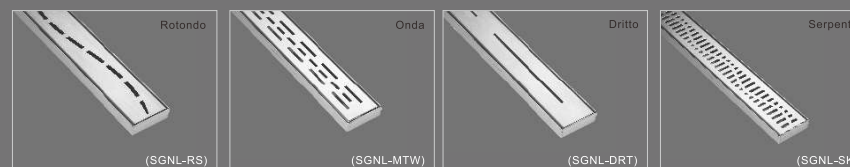
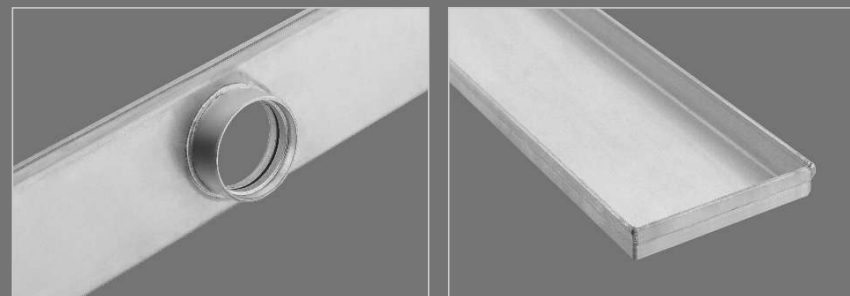


Sizes available: 600-800-900-1000-1100-1200-1500-1800.



## 304 Stainless Steel Floor Drains

### Project range (25mm deep)



# The Stainless Steel Advantage

Stainless steel, unlike iron, is an iron-containing alloy, a substance made up of two or more chemical elements and has only been around for just over 100 years. Harry Brearley of Sheffield, UK is credited with inventing the first true stainless steel or as it was called 'rust-less steel', in his search to solve the problem of erosion in gun barrels during the First World War. Chromium was the breakthrough that had been missed in previous attempts and when added to molten iron it created a steel that was resistant to corrosion.



It is hard to believe, looking back, that stainless steel has been around for such a short time. Stainless steel has revolutionised every area of modern life from the manufacturing, healthcare, food handling, automotive and construction sectors.

So, what makes stainless steel such a success across all areas of everyday life? Corrosion resistance has already been mentioned, heat resistance (of up to 1200°C [2192°F]), formability and weldability, durability, and the fact the metal does not readily react to many substances, along with it being inexpensive compared to specialist, non-corrosive alloys. Over the past century, metallurgists have invented and improved methods to make stainless steels, control their properties, and mass-produce them with consistent quality.

Since its initial discovery, further improvements to stainless steel occurred at a fairly rapid pace. In 1919, Elwood Haynes obtained a patent on martensitic stainless steel, in 1929 William J. Kroll of Luxembourg was the first to discover precipitation-hardening stainless steel, and in 1930 duplex stainless steel was first produced in Sweden at the Avesta Ironworks.

Today we talk about grades of stainless steel with the two most common grades being 304 and 316. The key difference is the addition of molybdenum, an alloy which drastically enhances corrosion resistance, especially for more saline or chloride-exposed environments. 316 stainless steel contains molybdenum, but 304 doesn't.

At Bella Vista we understand the corrosive nature of the bathroom environment and the external elements effect on our range of shower grates and we are proud to bring peace of mind to our customers. Bella Vista shower grate ranges are predominantly available in 316 grade stainless steel, with a value range available in 304.

Bella Vista also focusses on quality control with testing of the stainless steel undertaken during production of our grates to guarantee we are using only the grade we have stated and not trying to pass off an inferior product as something that it is not.

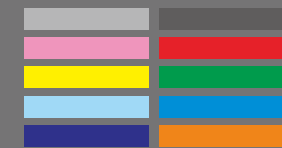
Bella Vista has a short but exciting history with stainless steel and we hope you get to enjoy the benefits of stainless steel in your new bathroom or construction project for many years to come.



Black



Stainless



FOR COLOR WARRANTY REFER TO WEBSITE